

LTPR pattern positioning instructions

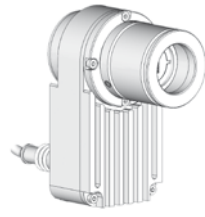
By default, LTPR pattern projector units are provided without any projection pattern inside. A PTPR series projection pattern can be easily mounted inside the unit by the user following these instructions, which apply to the following:



LTPRHP3W series

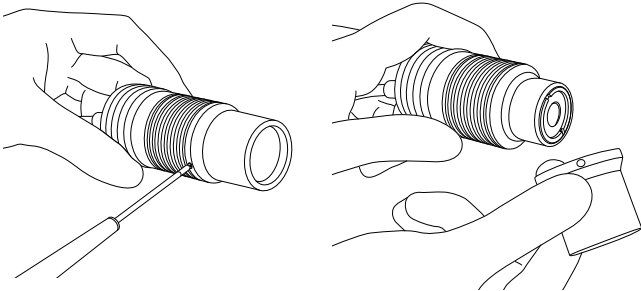


LTPRXP series

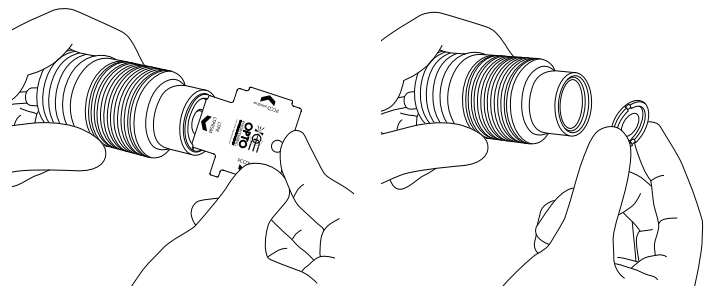


LTPRUP series

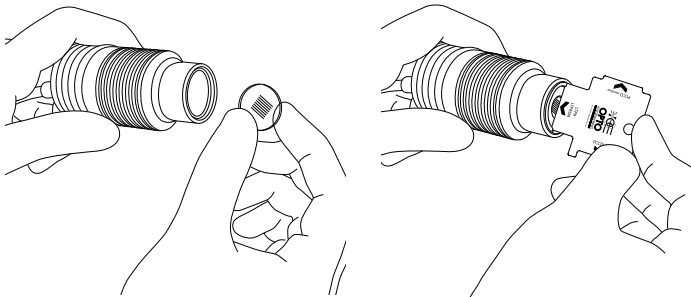
! Make sure to perform this procedure in a clean, non-dusty environment in order to prevent dust or other particles from entering the lens.



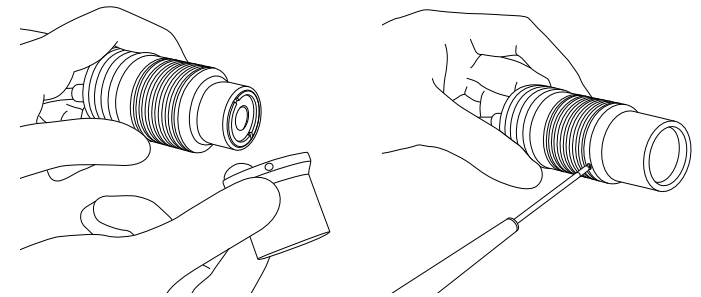
- 1** Loosen the socket head set-screws by means of an M1.5 or M2 Allen key and remove the C-mount adaptor



- 2** Remove the retaining ring using the provided PTTOOL instrument.

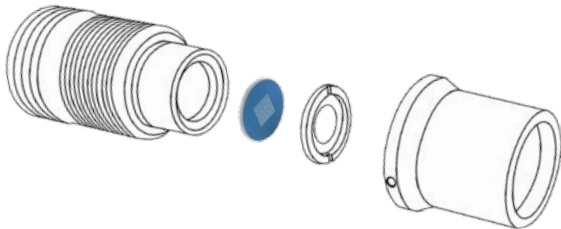


- 3** Fix the projection pattern in place by screwing the retaining ring with the provided PTTOOL.



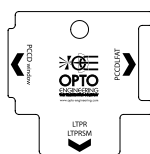
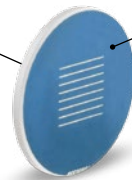
- 4** Insert back in place the C-mount adaptor and fix it by tightening the socket head set-screws with an M1.5 Allen key

Projection pattern orientation



Uncoated surface towards light source

Coated surface towards projection lens



Use the provided PTTOOL instrument to remove/insert each component (the correct side is correspondingly labeled).