


OE CAMERAS

Area scan cameras

GIGE VISION CAMERAS UP TO 12 MP




COE-G series
GenICam® PoE C-mount cameras ➤ 1/2.9"-1.1" FPS 313 fps




mvBlueCOUGAR series
GigE/Dual GigE cameras with Smart Features ➤ 1/3" - 1.1" FPS 436.9 fps

USB 3 VISION CAMERAS UP TO 12 MP




COE-U series
GenICam® C-mount USB3 cameras ➤ 1/2.5"-1.1" FPS 210 fps



mvBlueFOX3-2 series
USB3 cameras with Smart Features ➤ 1/2.9" - 1.1" FPS 436.9 fps


HIGH RESOLUTION CAMERAS FROM 17 TO 71 MP



COE HR AS-X series
20 - 26 MP area scan cameras ➤ 1" - APS-H FPS 40 fps




COE HR AS series
50 - 71 MP area scan cameras ➤ 35 mm FPS 27.3 fps



mvHR series **NEW**
17 - 31 MP area scan cameras ➤ 4/3" - APS-C FPS 90.1 fps

Line scan cameras



COE HR LS series
8k/16k line scan cameras ➤ 57.3 mm FPS 77 klps

CAMERAS PARAMETERS

➤ Sensor format ("/mm) FPS Frame/line rate, up to

Opto Engineering® machine vision cameras



Customized machine vision cameras

Industrial cameras specifically tailored for your needs

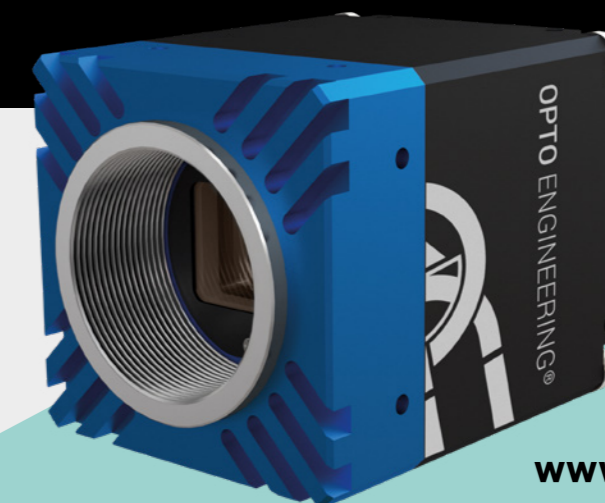
Nowadays machine vision is extensively employed in a wide range of sectors and applications, each with its specific requirements and constraints. Because of this variety of cases, often a customization of different components is needed and, being the core of each vision system, cameras make no exception to this.

With two decades of experience in the field of machine vision, Opto Engineering® offers **customized industrial cameras** specifically

tailored to answer every need. Designed and manufactured in Italy by Opto Engineering®, these cameras start from a set of basic common features to provide a wide range of customizations, both hardware and software/firmware.

Moreover, thanks to our expertise and know-how in optics and lighting, we can deliver vision solutions tuned to your most challenging applications. We can also provide pre-assemblies upon request, for example fixed camera and lens combinations.

CONTACT US



www.opto-e.com